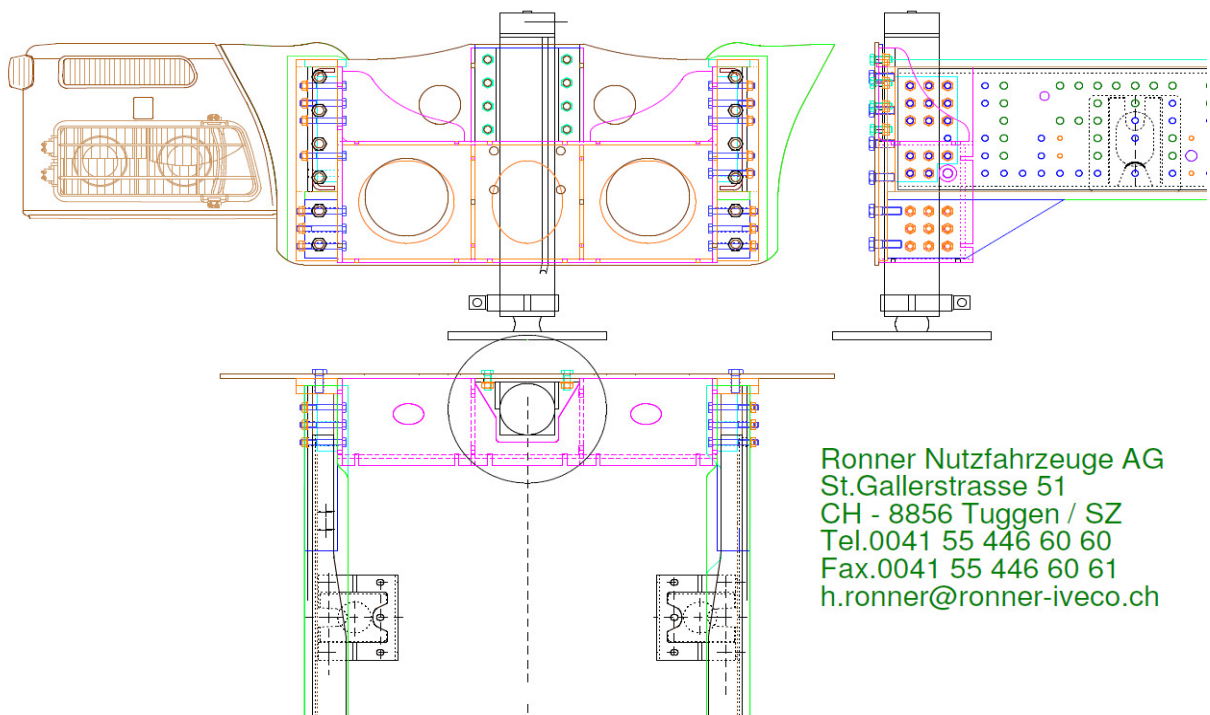


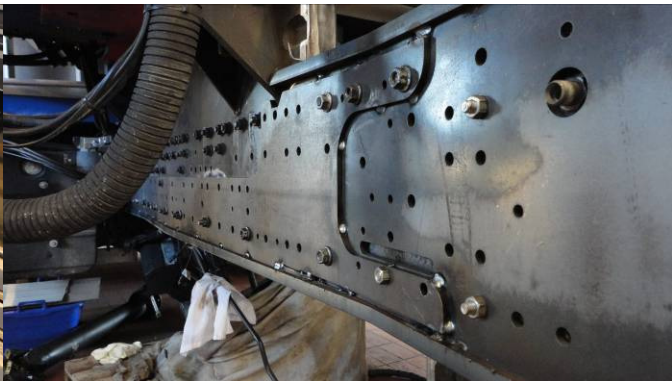
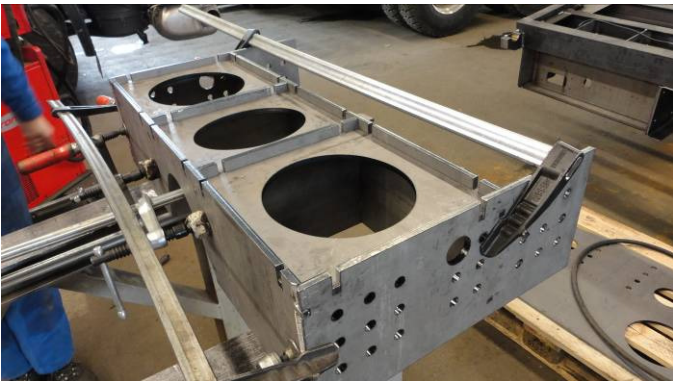
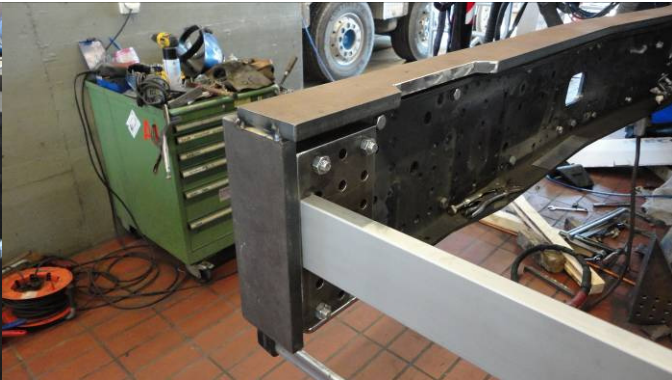
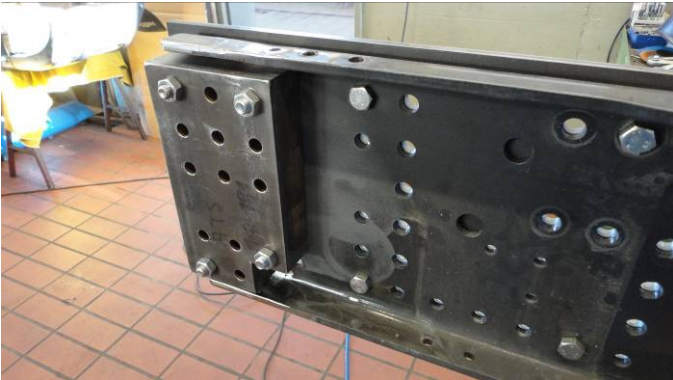
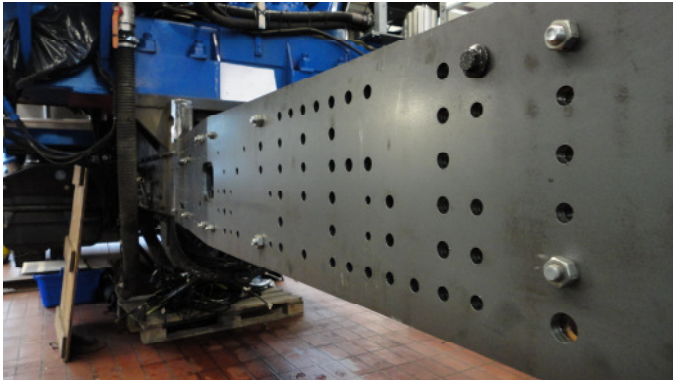
# DOKUMENTATION

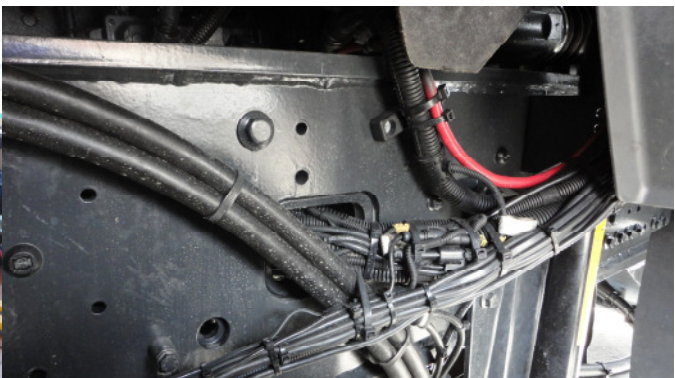
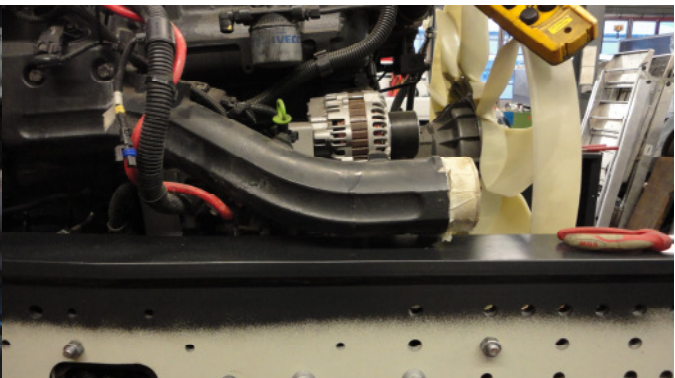
T R A K K E R

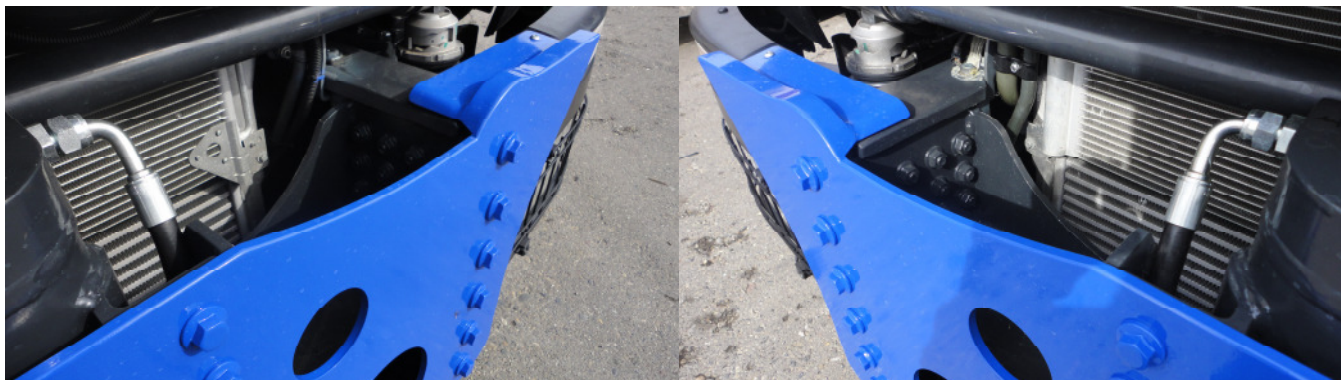
## FRONTABSTÜTZUNG



Ronner Nutzfahrzeuge AG  
St.Gallerstrasse 51  
CH - 8856 Tuggen / SZ  
Tel.0041 55 446 60 60  
Fax.0041 55 446 60 61  
h.ronner@ronner-iveco.ch







**Chassisverstärkung**

Seitenplatte	12mm, Qste 690
Ober Untergurt	20mm, Qste 690
Standicherheit	360° grösser 140%
Stütz fuss vorne	max. 25to Stützkraft
Mehrgewicht	800kg